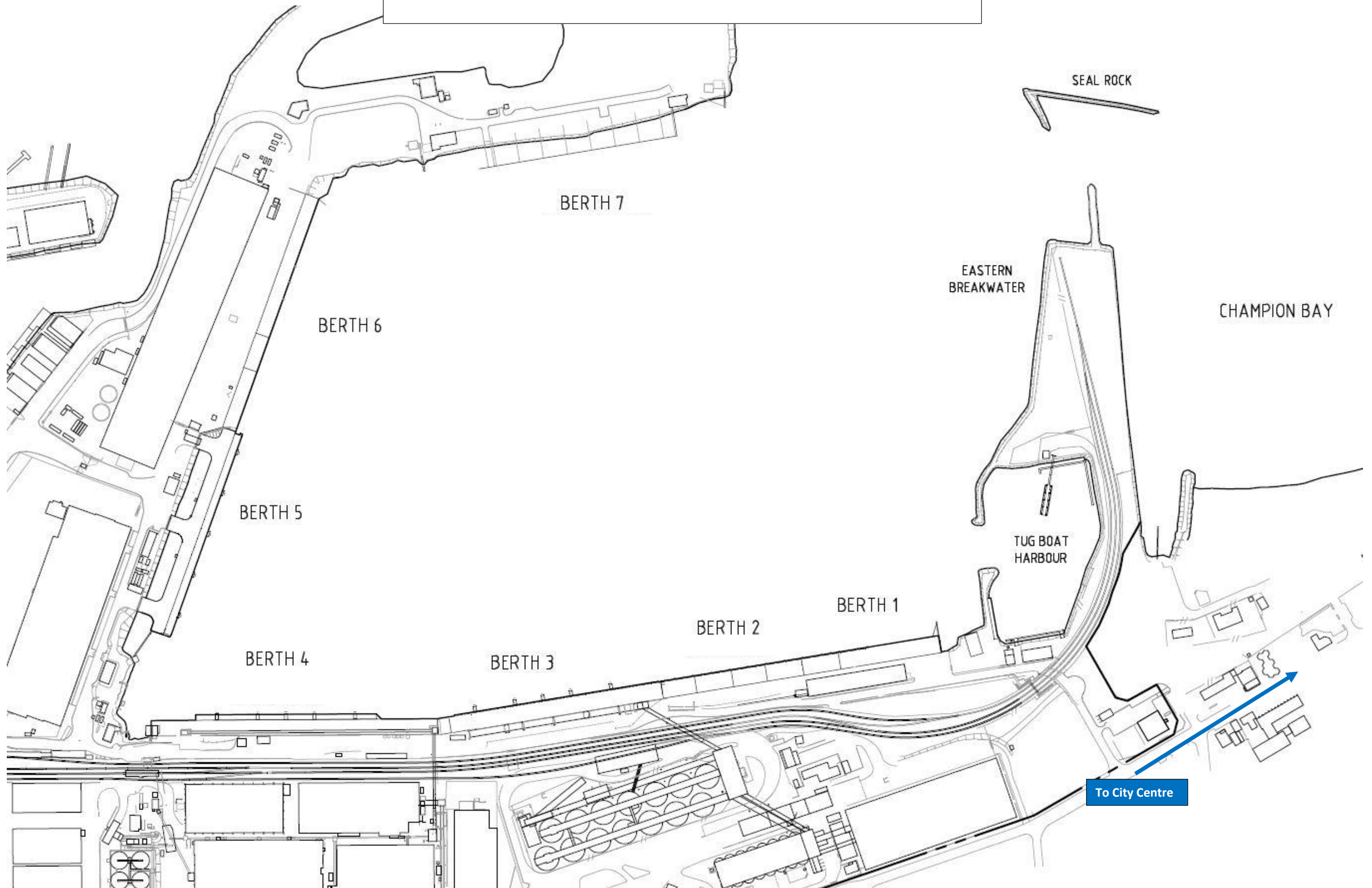


Geraldton Port Facilities

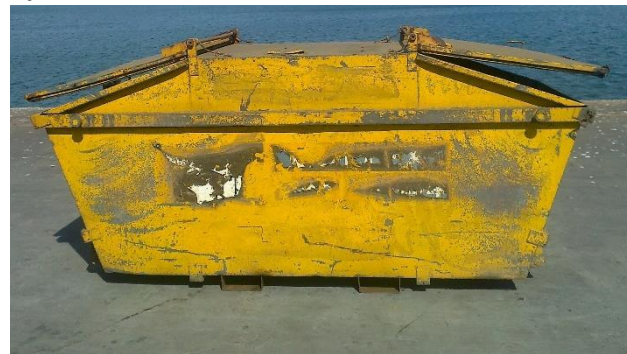


BINS FOR QUARANTINE WASTE

The Geraldton Port offers a waste collection of Galley scraps, Plastics, Bottles and Cans and Engine Room waste. The Yellow bins provided must be able to have the lids closed. No bags of rubbish are to be left around the bins. If the lids cannot be closed or there are bags of rubbish around the bins the crew of the vessel will have to take the rubbish back onto the vessel. More bins can be requested through your Ships Agent.



Quarantine Skip Bins



BULK WASTES

Disposal of Bulk waste Oil, noxious liquids, sewage, exhaust gas cleaning residues and ozone depleting substances are to be arranged through the vessels shipping agent.

Fishing From Ships in Western Australia

Fishing from a vessel in Western Australia without a licence is illegal and offenders could be prosecuted under the WA Fish Resources Management Act 1994.



Caution to Mariners

Mariners are cautioned that it is a Police offence in Australia to take photographs of children.



No toilet facilities on Berths

There are no Toilet Facilities on the berths for Ships crew. The Crew are to use the vessel toileting facilities.

MID WEST PORTS AUTHORITY

Duty Wharf Supervisor phone: 0437 413 734
Direct Fax: (08) 9964 0595

Email: wharfsupervisors@midwestports.com.au
Bus Driver (Security Guard): 0448 939 008

PERSONAL PROTECTIVE EQUIPMENT

Vessel crews are not permitted to walk around the wharf area unless they are required to do so for ship loading or discharge operations (eg: Draft Surveys, Liaising with Stevedores, Quarantine garbage, Tending Lines etc.)

If vessel crew have an operational need to leave the vessel they are required to wear **Head, Foot and Eye Protection plus High Visibility Clothing or Vest at all times.**



FALLING OBJECTS – BEWARE SHIPLOADERS



Beware of falling objects when walking on the berth for operational checks. Look Up. When on the berth do not walk under shiploaders or overhead conveyor galleries unless authorised by the stevedore on the vessel.



NO DISCHARGES TO WATER

Spillage of cargo onto the deck of the vessel must be collected to prevent it going into the water. Please direct any questions to the MWPA Environmental Officer on 0447 640 534 or HSEQ Manager on 0409 640 539.



BREAKING MOORING LINES



From time to time vessels may part/break mooring lines while alongside a berth. The port understands that this may happen, and requests that the vessel records the:

- **date and time;**
 - **displacement and drafts**
 - **location of the mooring Line (Head, Stern, Fwd Spring & Aft Spring)**
- Before the vessel departs this information will be requested, please provide it. This information is kept for the ports records only.