

South Tomi Wreck Site – Dangerous for Diving

Number: 02 / 2024

Date Issued: 18 January 2024

Date of effect:	18 Jan 2024
Details:	South Tomi Wreck Site – Dangerous for Diving
Former Notice:	LMN – 01 / 2020
Charts & Publications:	AUS 81 & AUS 751
Attachments:	Nil

Tomi Wreck Site, which is marked by an Isolated Danger Mark, has been declared as unsafe and closed for commercial or recreational activities and must be avoided at all times.

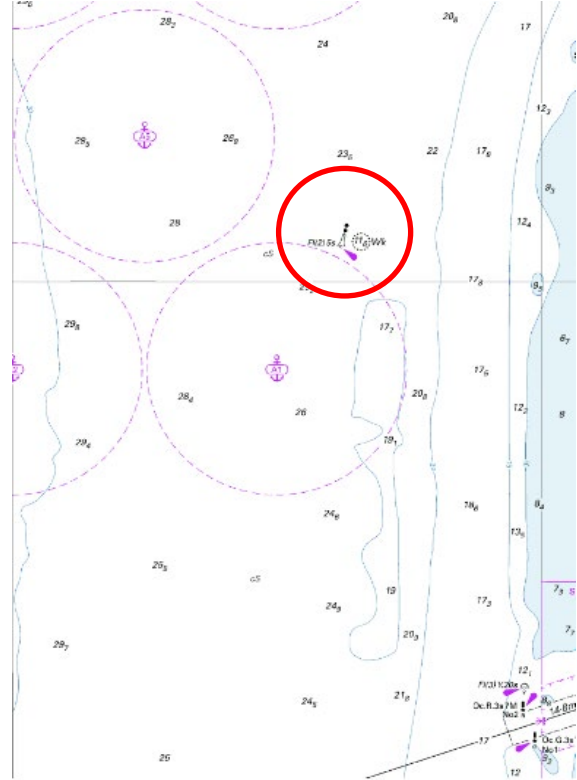
Reference Buoy	Coordinates	Light Characteristics
South Tomi Wreck Buoy	28°43.87'S 114°33.24'E	White Light – Fl(2) 5s

All enquiries relating to this closure must be directed to the below at the City of Greater Geraldton.

Paul Radalj
Director Corporate Services
City of Greater Geraldton
E: paulr@cgg.wa.gov.au
M: 0407 232 244



Photo of “South Tomi Wreck Buoy”



Location of “South Tomi Wreck Buoy”



Heathcliff Pimento

Harbour Master (Geraldton)