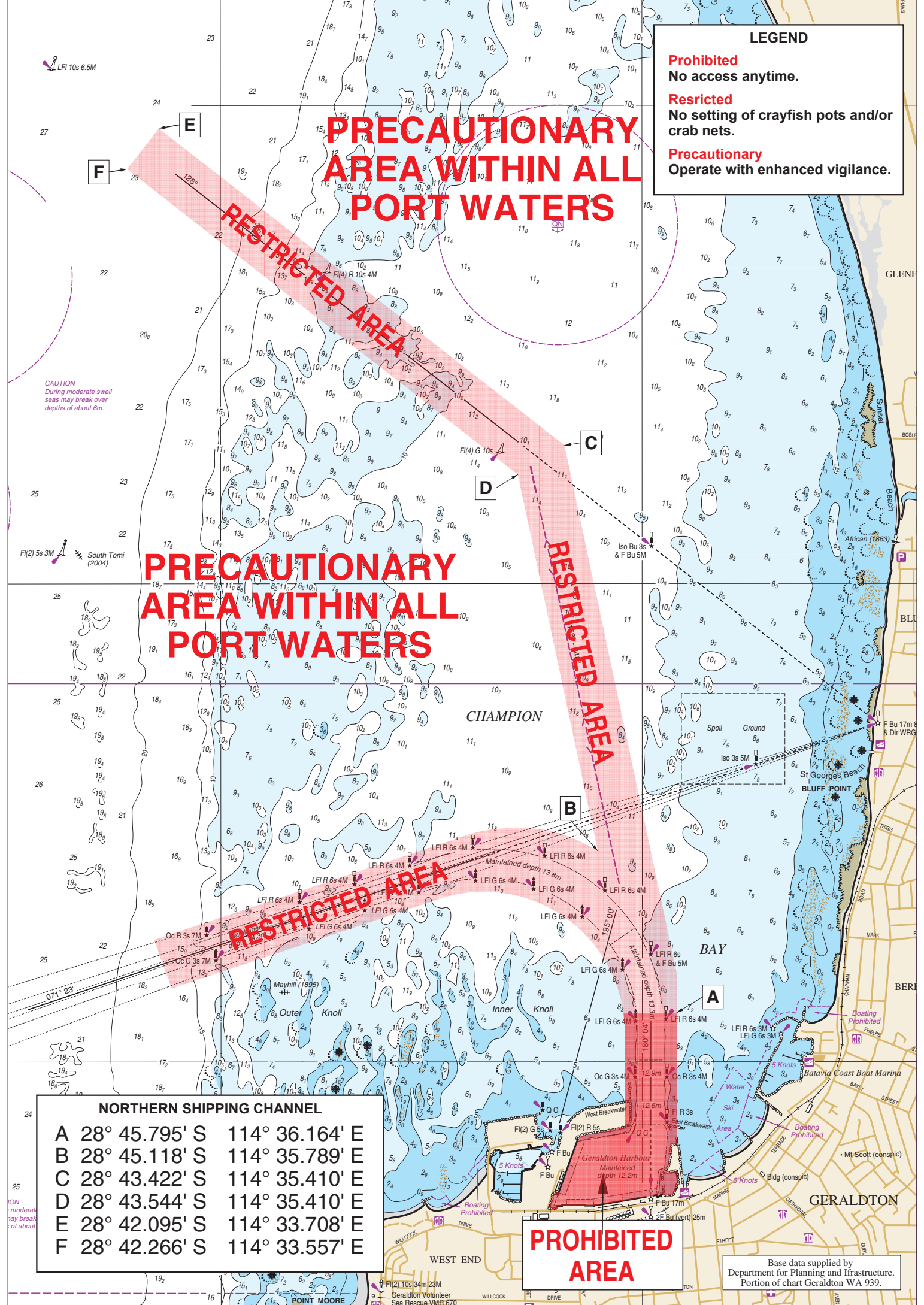


LEGEND

- Prohibited**
No access anytime.
- Restricted**
No setting of crayfish pots and/or crab nets.
- Precautionary**
Operate with enhanced vigilance.



PRECAUTIONARY AREA WITHIN ALL PORT WATERS

RESTRICTED AREA

PRECAUTIONARY AREA WITHIN ALL PORT WATERS

RESTRICTED AREA

RESTRICTED AREA

PROHIBITED AREA

NORTHERN SHIPPING CHANNEL

A	28° 45.795' S	114° 36.164' E
B	28° 45.118' S	114° 35.789' E
C	28° 43.422' S	114° 35.410' E
D	28° 43.544' S	114° 35.410' E
E	28° 42.095' S	114° 33.708' E
F	28° 42.266' S	114° 33.557' E

Base data supplied by Department for Planning and Infrastructure. Portion of chart Geraldton WA 939.